

Bringing Your Ideas *Innovations to Life*



**Industrial Contracting - Engineering - Manpower Supply
Equipment Rental – Onshore/Offshore Support**

About Us

Al-Reemah Contracting Company an Industrial Contracting, Engineering, Support Services organization has made a major contribution to the development of country's commercial and industrial infrastructure, having successfully undertaken projects in virtually every sector of the country's economy.

We are growing and diversifying to meet the demands of our customers, without sacrificing quality and fair price. Although we have increased our sales, number of employees and customer base, we continue to offer the personal service upon which founded the company.

Al-Reemah Contracting Company is dedicated to providing the following services in the Kingdom:

- Industrial Contracting.
- Engineering.
- Manpower Supply
- Rental Solutions.

Al-Reemah Contracting Company are committed to provide a wide range of high-quality products and superior services to all our clients in both private and public sectors, and build long-term, sustainable relationships with our suppliers, manufacturers, principals, joint venture partners, etc.,

in order to position ourselves effectively in the marketplace and expand our operations and capabilities to help us reach our corporate goals and objectives and make an effective contribution to the economic development of the Kingdom.

Our dedication to quality, efficiency & profitability is undiminished whilst continuing to build a highly competent and professional workforce. The pioneering traditions of the company are evident today by being firmly committed to providing high-end contracting and engineering services as well as support service facilities to meet the requirements of its clients.

The company's impressive reference list of completed and ongoing projects throughout the Kingdom reflects diversity and complexity. The company continues to broaden its expertise and build on its recognized strengths through strategic joint venture partnerships that further enhance its engineering and contracting expertise.

Al-Reemah Contracting Company closely monitors and coordinates main contractors and sub-contractors from time to time to maintain good quality works at all time. We are best known for our ability to deliver projects before deadlines, with cost savings to clients. Time and again, on every project, we exceed our clients' expectations and add another successful project to our enviable resume.



About Us

OUR VISION

To lead the Kingdom's Industrial Contracting and Engineering sector by providing outstanding Qclient value through a combination of expertise, technology, quality and safety management. Our goal is to provide the highest quality service accompanied by outstanding, personalized and tailored turnkey solutions to meet the demand of current and potential clients within all sectors of the oil, gas and petrochemical company shipping, manufacturing and construction industries.

OUR MISSION

- Dedication to quality, efficiency & profitability while continuing to build a highly competent and professional workforce.
- To broaden its expertise and build on its recognized strengths through strategic joint venture partnerships that further enhance its engineering & contracting expertise.
- To become leading Industrial Contractor, providing quality work, competitive pricing & less down time for our customers.

CORE BUSINESS VALUES

Al-Reemah Contracting Company is committed to delivering the best solutions for our customer's most complex and demanding requirements. We strive to maintain exceptional levels of service and reliability and exceed our client's expectations within various industry segments.



OUR SERVICES

Al-Reemah Contracting Company provides the best quality and value added services to our clients in all spheres of business. Backed by a strong foundation of professional integrity, based on our values of trust and commitment, we provide engineering solutions to our customers and the construction industry; forging strong relationships with our business partners and the community at large. The group has engineered intelligent expansion and diversification and has emerged today as a full-fledged organization in Industrial Contracting, Engineering, Support services.



Industrial Contracting

Maintaining contact and extending our services to customers outside of our immediate area is one of our objectives at Industrial Contracting and Engineering.

Al-Reemah Contracting Company is the Industrial Contracting and Engineering Company in the Kingdom. We are primarily engaged in providing complete civil, mechanical, electrical and fabrication solutions across a wide range of construction projects.

We are best known for our ability to deliver projects before deadlines, with cost savings to clients. Time and again, on every project, we exceed our clients' expectations and add another successful project to our enviable resume.

We are growing and diversifying to meet the demands of our customers, without sacrificing quality and fair price. Although we have increased our sales, number of employees and customer base, we continue to offer the personal service upon which founded the company. Under the Industrial Contracting we have the following divisions that serve our customers:

- ✓ *Industrial Contracting.*
- ✓ *Engineering.*
- ✓ *Manpower Supply*
- ✓ *Rental Solutions.*



Civil

Based on the clients' requirements and specifications, the company leverages its internal competencies and experiences to streamline the project costs and provides the client with value engineered design.

The company undertakes a project based on the requirements of the client as per preapproved designs completed by a third party engineering/design office. Performing maintenance work in all kinds of pipeline on industries. that excavate soil from the buried pipeline and providing concrete support for the pipelines etc.

Our company handle public projects such as parking lane, pedestrian path, and painting works for the commercial area we are firmly complete the jobs before the deadlines. The company designs steel buildings solutions and undertakes the task

of supplying and erecting the steel structures. This is typically done for large steel projects such as power plants and oilfield applications.

Al-Reemah Contracting Company is leading Civil and Electro-Mechanical Construction Company in the G.C.C. for more than two decades. The company has played a significant role in the industrialization with well-qualified and experienced Managers, Engineers and Workforce.

Civil Engineering Division has achieved a notable record in the field of civil construction. This is one of the most respected companies in KSA. Their construction projects are part of the landmarks that symbolize the development of the Kingdom.





Mechanical

The Mechanical division of Al-Reemah Contracting Company has been operating through a comprehensive regional network throughout the Middle East. From power generation and desalination plants, to factories, hotels, hospitals, and intricately sophisticated smart buildings, our track record is a prestigious list of efficiently delivered projects.

Established contacts in the region, a dedicated workforce and an exacting standard for completion have gained the company a competitive edge well recognized in the industry. Al-Reemah Contracting Company benefits from a working network in many areas in the Middle East which allows it to mobilize rapidly throughout the region.

We are providing work such as industrial plumbing for the process pipe line drains fittings, valves, valve assemblies, and devices we install in a building for the distribution of water for drinking, heating and washing, and the removal of waterborne wastes are well sized and securely installed. (Natural Gas, crude, chemicals, and etc.) installing and maintaining the different kinds of valves, flanges, spools with good experienced technicians with support of mechanical engineering section and we aware to follow the magnitude standards.

Also provides industrial support such as Also we are provides HVAC works The main purpose of Executive contractor contracting. design and implementation of a Heating, Ventilation, and Air-Conditioning (HVAC) system is to help maintain good indoor air quality through adequate ventilation with filtration and provide thermal comfort. HVAC systems are among the largest energy consumers in any premise. The choice and design of the HVAC system makes the difference in any living and working environment. This is why we strive to design quality systems that are cost-competitive while successfully. Providing an appropriate quality air, lower energy costs, and easier maintenance.

Al-Reemah Contracting Company offers full contracting services and has the flexibility to assist the client by securing additional expertise for feasibility studies, preliminary designs, financing opportunities and joint venture partners for optimum project delivery.

Al-Reemah Contracting Company has prided itself on an impressive record of successfully completed projects, and has enjoyed the reputation of meeting its schedules and doing so within budget and to the highest client satisfaction.



Electrical

The electrical division of Industrial Contracting and Engineering has developed as a natural complement to the well-established mechanical enterprise. Providing electrical power and control to the air and fluid systems that we install completes an integrated, engineered, one stop source that is more efficient and economical for our customers.

We are prepared and able to serve your commercial and industrial electrical needs.

Emergency Lighting Systems:

Emergency lighting refers to light fixtures whose purpose is to illuminate the exit pathway of a building in an emergency situation when AC electrical power is lost. During such emergencies, normal lighting systems cease to operate and emergency lighting systems turn on.

- Central battery system
- Maintained lighting fixtures
- Non maintained lighting fixtures

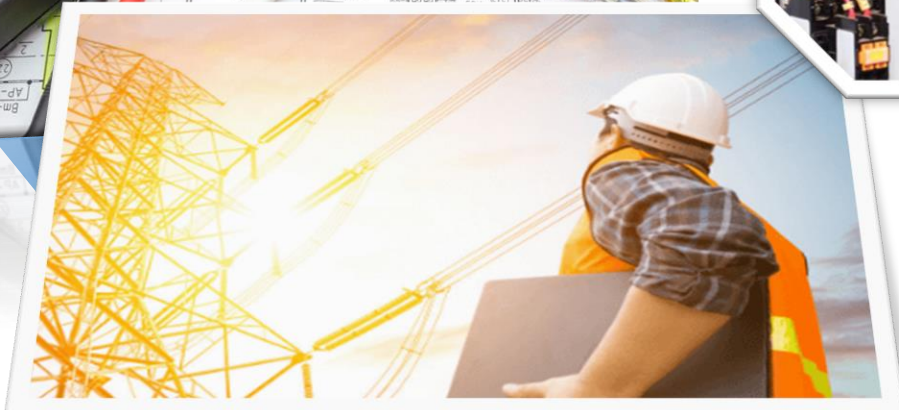
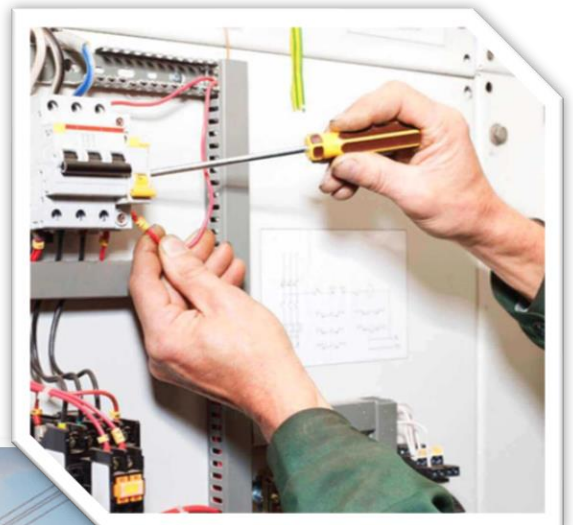
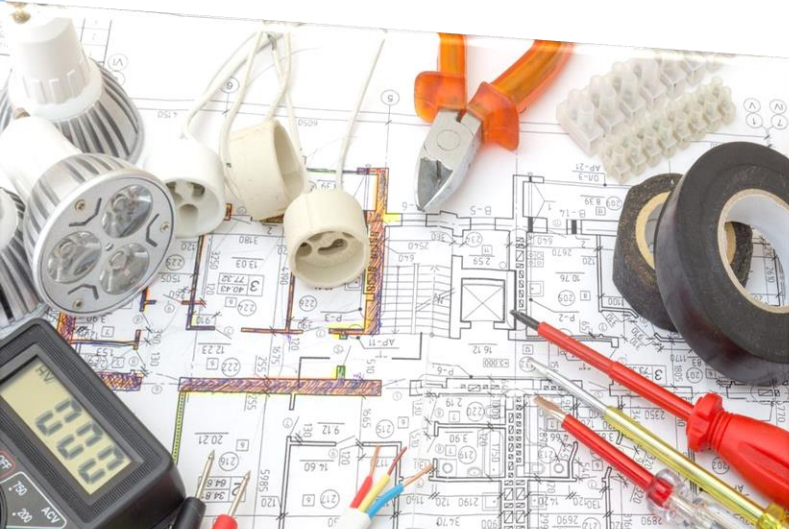
Lighting Control Systems

Lighting control systems are used for working, aesthetic, and security illumination for interior, exterior, landscape lighting and theatre stage lighting productions. They are often part of sustainable architecture and lighting design for integrated green building energy conservation programs.

- Touch screen
- Keypads
- Push buttons
- Dimmers

Al-Reemah Contracting Company consists of experienced engineers, supervisors and technicians who are responsible in ensuring round the clock client satisfaction.

Al-Reemah Contracting Company closely monitors and coordinates main contractors and sub-contractors from time to time to maintain good quality works at all time



Fabrication Work

Al-Reemah Contracting Company is recognized as one of the largest and most technically capable steel fabricators in the Middle East. This reputation has been earned by consistently exceeding the expectations of our customers with regard to manufacturing and product excellence supported by exceptional technical service. We continue to focus on profitable growth of our business.

At Al-Reemah Contracting Company, we strive to consistently exceed client expectations. Our goal is to provide the highest quality equipment and services to our clients, most of whom operate in the most remote and harsh environments on earth. Al-Reemah Contracting Company is

there to assist our clients achieve their objectives in the most cost-effective manner possible without compromise to quality and the environment.

Keeping abreast of the latest technology available in our industry puts Industrial Contracting and Engineering a step ahead of the competitors, and opens doors to markets not previously explored by most mechanical contractors. With our capabilities under one roof, our customers have no need to search for an outside fabrication source. And also we provides industrial fabrications such as spools, flanges, vessels, and insulation fabrications.



Onshore-Offshore Support

Offshore Support

With the vast experience in Oil and Gas Region Al-Reemah has the know-how and equipment needed to make jobs go as planned. Al-Reemah provides services across the globe that cater to customers engaged in various stages of offshore surveys, construction, and pipe and cable laying, exploration, extraction and production activities. The services of Al-Reemah Offshore include anchor handling, transporting of construction materials, barge and tug support, crew transportation, delivery of supplies and provisions, emergency response, and more.



On shore Support

Our Onshore Support focuses on factors such as Innovation, Technical Compliance, Suitability, Quality, Delivery, Operational Support, Service Support and Competitive Pricing. Al-Reemah supports its customers through the entire cycle, ensuring rigs and other equipment and materials get to where they are needed, when they are needed. Al-Reemah is a total solution provider to the Oil & Gas sector with a proven ability to resolve complex problems.



Engineering

Al-Reemah Contracting Company Engineering's portfolio consists of industrial structures, infrastructure development, prestigious towers, drainage pipelines, land reclamation and offshore works such as piling, office blocks, warehouses, and other commercial structures. The company has a dedicated team of engineers, technicians, skilled and unskilled workers and utilizes the latest construction methods and machinery for its projects and has successfully executed prestigious projects for government ministries as well as the private sector under the supervision of leading consultants. Furthermore, the company has a long history of participating in joint venture, and as consortium partners, with major international contracting companies to undertake highly specialized turnkey projects.

We provide industrial maintenance and support works, such as fence reinstatement and modifications as per the site requirements. Also done by planning and execution by significant engineering standards.

Supporting industrial turn-around and start-up using advance engineering knowledge, Our firmly strength is because of updated engineering standards. Below engineering supports we are providing using joint venture.

Instrumentation works various instruments calibrations, panel installation and instrumentation and control loop modifications. developing, installing, managing and maintaining equipment

which is used to monitor and control engineering systems, machinery and processes.

Mechanical engineering- measuring the performance of mechanical components, devices and engines. agreeing budgets, timescales and specifications with clients and managers. Maintaining and modifying equipment to ensure that it is safe, reliable and efficient. using computer-aid design/modelling software.

Electrical engineers design, develop, and test electrical devices and equipment, including communications systems, power generators, motors and navigation systems, and electrical systems for automobiles and aircraft. They also oversee the manufacture of these devices, systems, and equipment.

Civil Engineering -for creating, improving, and protecting our immediate environment. They plan and oversee construction and rebuilding, as well as the maintenance of roads, bridges, tunnels, railways, dams, harbours, power plants, and airports.

Every employee is continually updating their credentials with seminars, state accreditation and training classes. Our professional know-how enables us to do the job right the first time. Whether your needs require the utilization of our design and build capabilities, computerized estimation or specialty in-house fabrication of pipe, sheet metal and structural steel, Industrial Contracting and Engineering will serve you with pride.



Engineering

Al-Reemah Contracting Company Engineering's portfolio consists of industrial structures, infrastructure development, prestigious towers, drainage pipelines, land reclamation and offshore works such as piling, office blocks, warehouses, and other commercial structures. The company has a dedicated team of engineers, technicians, skilled and unskilled workers and utilizes the latest construction methods and machinery for its projects and has successfully executed prestigious projects for government ministries as well as the private sector under the supervision of leading consultants. Furthermore, the company has a long history of participating in joint venture, and as consortium partners, with major international contracting companies to undertake highly specialized turnkey projects.

We provide industrial maintenance and support works, such as fence reinstatement and modifications as per the site requirements. Also done by planning and execution by significant engineering standards.

Supporting industrial turn-around and start-up using advance engineering knowledge, Our firmly strength is because of updated engineering standards. Below engineering supports we are providing using joint venture.

Instrumentation works various instruments calibrations, panel installation and instrumentation and control loop modifications. developing, installing, managing and maintaining equipment

which is used to monitor and control engineering systems, machinery and processes.

Mechanical engineering- measuring the performance of mechanical components, devices and engines. agreeing budgets, timescales and specifications with clients and managers. Maintaining and modifying equipment to ensure that it is safe, reliable and efficient. using computer-aid design/modelling software.

Electrical engineers design, develop, and test electrical devices and equipment, including communications systems, power generators, motors and navigation systems, and electrical systems for automobiles and aircraft. They also oversee the manufacture of these devices, systems, and equipment.

Civil Engineering -for creating, improving, and protecting our immediate environment. They plan and oversee construction and rebuilding, as well as the maintenance of roads, bridges, tunnels, railways, dams, harbours, power plants, and airports.

Every employee is continually updating their credentials with seminars, state accreditation and training classes. Our professional know-how enables us to do the job right the first time. Whether your needs require the utilization of our design and build capabilities, computerized estimation or specialty in-house fabrication of pipe, sheet metal and structural steel, Industrial Contracting and Engineering will serve you with pride.



Our Clients





Completed Projects

1. SUPPLY OF PORTABLE WATER TANKERS , SAUDI ARAMCO , JUBAIL

Location	Duration	Scope Of Work
ABU ALI	2 YEARS	Supply of Portable water Tanker capacity 32000 Ltr with operator

2. PILING WORK , SAIPEM , DAHRAN

Location	Duration	Scope Of Work
DAHRAN	Started on 22-08-2023 Completed on 20-09-2023	Supply and Fabrication of Pile Guide (Qty; 2 EA) with Roller (8 EA Main & 3 EA Spare) to be utilize in Sea Bridge Piling Works.

3. SUPPLY OF PORTABLE WATER TANKERS , SABIQ, JUBAIL

Location	Duration	Scope Of Work
AL JUBAIL	2 YEARS	Supply of Portable water Tanker capacity 32000 Ltr with operator

4. JESCO, JUBAIL

Location	Duration	Scope Of Work
JUBAIL	Started on 18-08-2023 Completed on 22-09-2023	Repairing of underground compressed air pipe line 2-inch size- material- HDPE 2 inch Excavation of the area replace the fittings and pipes as per requirement All material to be provided by the vendor for repairing the job provide support to the pipe Testing, backfilling the excavated area and normalizing



Completed Projects

5. JESCO, JUBAIL

Location	Duration	Scope Of Work
JUBAIL	Started on 25-08-2023 Completed on 18-09-2023	<ol style="list-style-type: none"> 1.Remove the contaminated cobble stone from the drying bed 1 and 2 2. Clean the stone basin wall and the screen of drying bed 1 and 2 3. Replace by new cobble stone, volume 45m³ , size 25 to 35 mm on drying bed 1 and 2

6. SUPPLY OF PORTA CABIN OFFICE

Location	Duration	Scope Of Work
NEOM	Delivered within 2 weeks from date of PO received	Porta Cabin 12m all weather resistance with door , Stair case, Off sight Light, Smoke Detector Washroom Standard Quality, Firefighting Box and Foundations.

7. SUPPLY OF PORTA CABIN OFFICE

Location	Duration	Scope Of Work
NEOM	Delivered within 2 weeks from date of PO received	Porta Cabin 12m all weather resistance with door , Stair case, Off sight Light, Smoke Detector Washroom Standard Quality, Firefighting Box and Foundations.

8. SUPPLY OF PORTABLE WATER TANKERS , NESMA AND PARTNERS, NEOM

Location	Duration	Scope of work
NEOM	From July 2023 Still on service	Supply of portable water tanker capacity 32000 ltr with operator



Completed Projects

5. JESCO, JUBAIL

Location	Duration	Scope Of Work
JUBAIL	Started on 25-08-2022 Completed on 18-09-2022	<ol style="list-style-type: none"> 1.Remove the contaminated cobble stone from the drying bed 1 and 2 2. Clean the stone basin wall and the screen of drying bed 1 and 2 3. Replace by new cobble stone, volume 45m³ , size 25 to 35 mm on drying bed 1 and 2

6. SUPPLY OF JCB BACKHOE LOADER AND BOBCAT SKIDLOADER , NESMA

Location	Duration	Scope Of Work
NEOM	Started from 07-07/2023	Supply of jcb backhoe loader and bobcat skid loader without operator

7. SUPPLY OF PORTA CABIN OFFICE

Location	Duration	Scope Of Work
NEOM	Delivered within 2 weeks from date of PO received	Porta Cabin 12m all weather resistance with door , Stair case, Off sight Light, Smoke Detector Washroom Standard Quality, Firefighting Box and Foundations.

8. SUPPLY OF DIESEL TANKERS, NESMA AND PARTNERS, NEOM

Location	Duration	Scope of work
NEOM	From july 2023	Supply of Diesel tanker capacity 12000 ltr with operator



Completed Projects

9. JESCO, JUBAIL

Location	Duration	Scope Of Work
JUBAIL	Started on 25-08-2023 Completed on 18-09-2023	<ol style="list-style-type: none"> 1.Remove the contaminated cobble stone from the drying bed 1 and 2 2. Clean the stone basin wall and the screen of drying bed 1 and 2 3. Replace by new cobble stone, volume 45m³ , size 25 to 35 mm on drying bed 1 and 2

10. SUPPLY OF PORTA CABIN OFFICE

Location	Duration	Scope Of Work
NEOM	Delivered within 2 weeks from date of PO received	Porta Cabin 12m all weather resistance with door , Stair case, Off sight Light, Smoke Detector Washroom Standard Quality, Firefighting Box and Foundations.

11. SUPPLY OF PORTA CABIN OFFICE

Location	Duration	Scope Of Work
NEOM	Delivered within 2 weeks from date of PO received	Porta Cabin 12m all weather resistance with door , Stair case, Off sight Light, Smoke Detector Washroom Standard Quality, Firefighting Box and Foundations.

12. SUPPLY OF DIESEL TANKERS, NESMA AND PARTNERS, NEOM

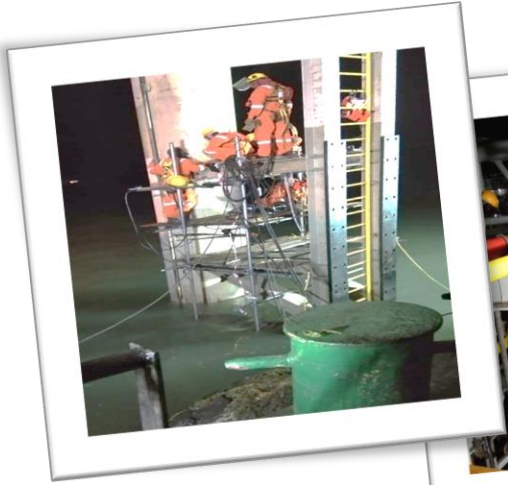
Location	Duration	Scope of work
NEOM	From July 2023	Supply of Diesel tanker capacity 12000 ltr with operator



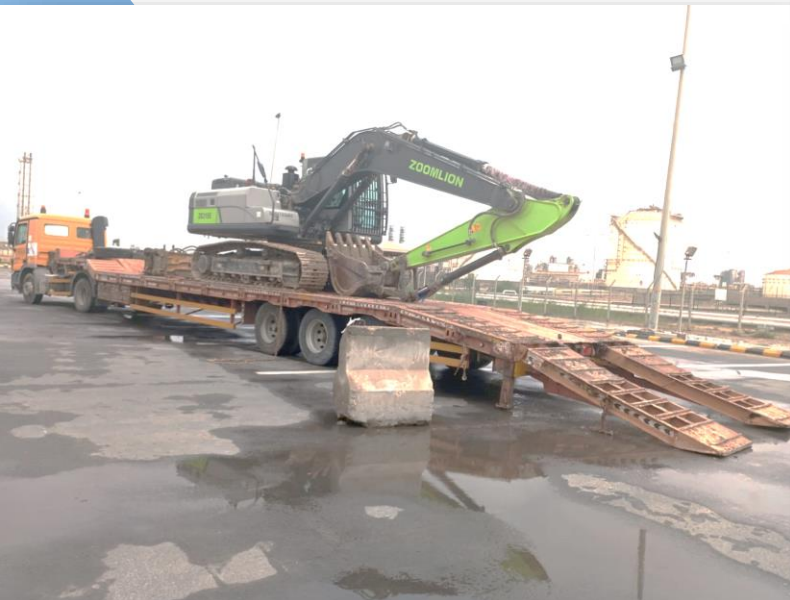
Completed Projects



Completed Projects



Our Equipment



Quality Policy

Quality is the drive behind our business with a Customer Focused approach. All our Business processes are developed, implemented and continually improved as per the Quality Management System standard with a clear goal of achieving and exceeding customer satisfaction and demonstrating continual improvement in all our key processes. We seek to maintain, monitor and continually improve the effectiveness of our Quality Management System by constantly reviewing our objectives and analyzing customer feedback.

Al-Reemah Contracting Company focuses on the conditional development of a high quality team by ensuring improvements are identified and appropriate solutions are initiated. We strive to ensure customer satisfaction which is met through product delivery –on time and within budget.

To this end we aim to develop a reputation as the premier organization in our field.

QUALITY POLICY

“It is our objective to win and enhance the confidence of our customers by our continuous endeavour to meet the needs of the customers through the involvement of every individual in the company”.





HSE Policy

Safety

Al-Reemah Contracting Company recognizes the importance of safety. It is a core part of our business activities and we strive to strengthen our policies and training programs to ensure our employees are working in a safe environment at all times, be it in our factories or on construction sites.

Since employees' occupational hygiene, health and safety are the essential parts of our business ethics, we, at Al-Reemah Contracting Company commit to allocate suitable and proper resources in fulfilling our policy as follows:

- We strictly conduct our operations in compliance with applicable occupational health and safety laws and regulations as per Government regulations
- All employees assume responsibility for this occupational health and safety commitment including in daily work implementation
- Risk minimization by process control and improvement is our aim. We focus on a safe and healthy working environment.
- We assure that our employees will be competent to perform assigned tasks safely. Education, training and activities in occupation health and safety will be conducted continually to create and maintain safety awareness
- Objectives and targets of occupational health and safety will be established and displayed in each section.

Health & Environment

At Al-Reemah Contracting Company we continually strive to create a safe working environment by being responsive, caring and committed to the various needs governing the security and well-being of employees. Skill orientation and training programs also form a major part of the various educational initiatives that the company undertakes to empower its employees in case of an emergency.

We, at Al-Reemah Contracting Company will take care that we do not degrade the environment in any manner. Our processes are non-polluting and environment friendly. Health, safety and the protection of the environment are of equal importance as our primary business and quality objectives. The preservation of human, physical and environmental assets is vital to the success and efficiency of our business. In this manner, shall we be able to manage and counter the hazards of our operations through health and safety programs for environmental protection.

We have set out the following generalized objectives with respect to health, safety and the environment.

- To prevent all injuries and reduce accidents at the workplace.
- To provide a safe and healthy working environment.
- To establish safe working practices throughout its operations.
- To provide training for all employees to help them work safely and protect the environment.
- To comply at all times with all statutory and customer obligations with regards to health, safety and environmental protection.
- To maintain, practice & update emergency response procedures.

رؤية VISION 2030

المملكة العربية السعودية
KINGDOM OF SAUDI ARABIA



شركة الريم للمقاولات AL-REEMAH CONT. COMPANY

101 برج الأعمال- مكتب رقم 405 - شارع الملك عبد العزيز- الجبيل -المملكة العربية السعودية
101 Business Tower, Office No. 405, King Abdul Aziz St.-Al Jubail-Kingdom of Saudi Arabia
Website: www.alreemah.com Email: info@lreemah.com